



# St Joseph's Catholic Primary School

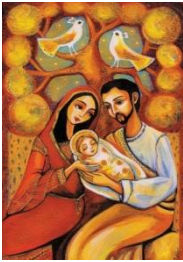
## Reception Newsletter

Autumn Term  
20<sup>th</sup> November 2017

### Religious Education

#### God's Family

*The children will continue to learn the story of the Nativity. .*



*During your special prayer times together, you may wish to read a simple story from a children's Bible about the Nativity. You could talk about Mary and Joseph and how they always trusted God's plans for them both.*

### Supporting learning at home



We will be continuing to explore the phonics from our RWI phonics scheme.

Please continue to encourage your child to read and write their phonics, from the week, at home. Play simple games to help your child to hear the individual sounds in words, eg. Where is the c-a-t? Please put this is the b-i-n.

In Maths, we will be exploring number and pattern. Thread coloured beads or use finger paint to make simple repeating patterns. Encourage your child to make up their own pattern sequences.

#### Exploring the story 'The Train Ride'

Talk about any train journeys that you have experienced together. Where did you go? What did you see on the journey? Have a look at both fiction and non-fiction books about trains. Encourage your child to make up a story about a train journey to somewhere magical!

#### Practising our Nativity

Please support us by helping your child to learn the Nativity songs at home.

### Reminder



**Please remember to return your child's 'Assault Course' fundraiser sponsorship forms and money raised by this Friday 24<sup>th</sup> November. Thank you very much!**

### Uniform

We would ask that **every** item of your child's uniform (including their hat, scarf and gloves) is clearly labelled with their name. Thank you for your cooperation!



### Donations

We are looking for a range of stationery items, eg. different kinds of tape, envelopes, labels and squared paper (for our budding designers!). We would also appreciate small boxes and plastic bottles for junk modelling.

**NB. We are unable to use boxes that have contained items made from, or have been in contact with, nuts or eggs. Thank you!**

### Reception Nativity Dates

**All concerts start at 2pm**

RJ 12<sup>th</sup> December  
RS 14<sup>th</sup> December  
RT 15<sup>th</sup> December

